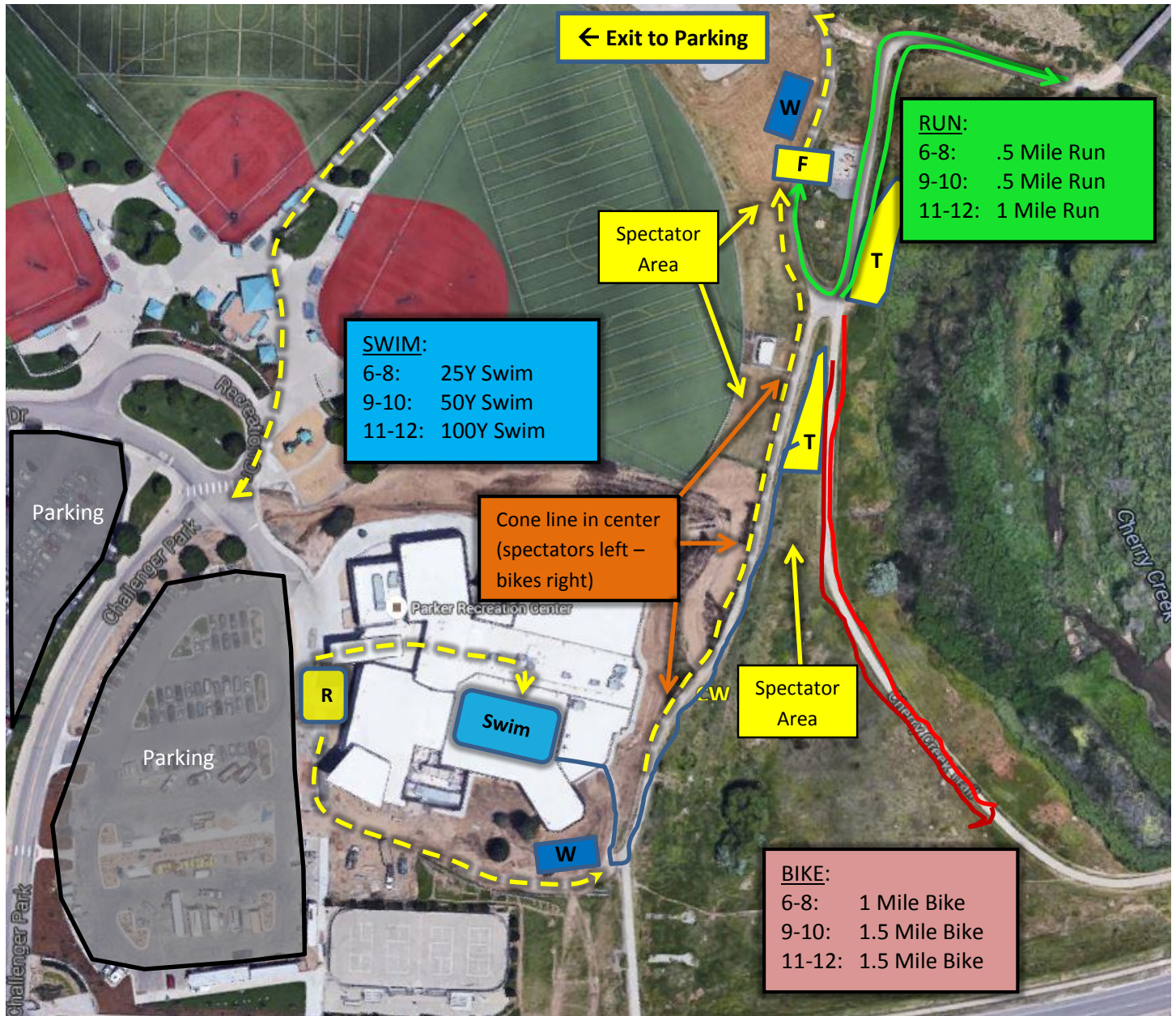


Kids' TRY-athlon – Site Map

Parker Recreation Center – 17301 E. Lincoln Ave.



Parents:

Please drop off your child's bike and bike gear in the first transition area and any run gear they may have in the second transition area before checking in and going to the pool. Please remember to take any items your child leaves behind in each transition area with you as you move to each spectator area and toward the finish line.

- R = Registration/Check-In
- T = Transition Area (Transition Flags)
- F = Finish (Finish Flag)
- W = Water
- CW = Crosswalk

- Swim to Bike =
- Bike =
- Run =
- Spectators =